

cookplay
2022



www.cookplay.eu

cookplay

PORCELAIN COLLECTIONS 2022

Jelly

Gochi

The Tablet

Shell Line

Yayoi

Jomon

Naoto

Fly



Ana Roquero, Designer & CEO of Cookplay

At Cookplay we are working for an honourable idea; to create the new generation of tableware, designing new forms with sustainable materials.

Our aim as designers is to look to our users with the intention to generate an emotional connection around the table through our organic and sensual designs, influenced by the most essential forms of nature.

At Cookplay we follow creative freedom, we break down the basis of the traditional table with an objective: to provoke emotion in the tableware world.

Collection after collection we are established in the hospitality sector as a risky conceptual brand in porcelain and sugarcane proposals, without forgetting functionality and pure design.

We invite you to discover our latest collection, Jelly, whose organic design feels like holding a little piece of nature in your hands.

En Cookplay trabajamos por una idea honesta; crear una nueva generación de menaje con nuevos diseños en materiales sostenibles.

Como diseñadores miramos a nuestros usuarios con la intención de establecer una conexión emocional alrededor de la mesa a través de nuestros diseños orgánicos y sensoriales, relacionados con las formas más esenciales de la naturaleza.

En Cookplay nos guía la libertad creativa, romper barreras en torno a la mesa tradicional, teniendo como máximo objetivo "provocar emoción en el mundo del menaje"

Colección tras colección nos hemos introducido en el sector de la hostelería con propuestas conceptualmente arriesgadas en porcelana y caña de azúcar, pero siempre funcionales y con un depurado diseño.

Os invitamos a conocer nuestra última colección, Jelly, cuyo orgánico diseño es como acariciar un trocito de naturaleza en tus manos.

Jelly



The beauty of organic fluidity on the table





a cool & tender design





JELLY COLLECTION

- Available in porcelain matt finish
- Available in porcelain glazed finish



Jelly Dinner

Matt: 16012
Glazed: 16002
29 x 23 x 2



Jelly Deep

Matt: 16013
Glazed: 16003
21 x 15.5 x 5



Jelly Platter

Matt: 16011
Glazed: 16001
37.5 x 19 x 2



Jelly Side

Matt: 16014
Glazed: 16004
18 x 11 x 2



Jelly Mini Bowl

Matt: 16015
Glazed: 16005
14 x 9 x 4.5



Jelly Cutlery Base

Matt: 16019
Glazed: 16009
6.5 x 2.5 x 0.8



Jelly Jar

Matt: 16018
Glazed: 16008
11 x 9 x 22



Jelly Mini Jar

Matt: 16017
Glazed: 16007
6 x 4.5 x 12



Jelly Glass

Matt: 16016
Glazed: 16006
8.5 x 7.5 x 8

JELLY BELTZ COLLECTION

- Available in black colour clay porcelain



Jelly Jar Beltz

16028
11 x 9 x 22



Jelly Mini Jar Beltz

16027
6 x 4.5 x 12



Jelly Glass Beltz

16026
8.5 x 7.5 x 8



Jelly Cutlery Base Beltz

16029
6.5 x 2.5 x 0.8

Gochi





Our most creative and amusing collection

GOCHI COLLECTION

· Available in porcelain matt finish



Mum
15004
D 21, H 6,5



Dad
15003
D 15,5, H 10,5



Girl
15002
D 12,5, H 7,5



Baby
15001
D 8, H 4 cm



Twins
15007
24,5 x 12 x 9,5



Uncle
15006
24,5 x 12 x 9,5



Puppy
15005
10 x 9,5 x 7

The Tablet





sophisticated
modernity



THE TABLET COLLECTION

· Available in porcelain matt finish



The Tablet

14001
25 x 20.5 x 1.5



The Pot

14002
15.5 x 14.5 x 9



The Nest

14003
12 x 10 x 8.7



The Board

14005
10 x 31.5 x 3



The Ball

14001
7 x 7 x 7.7



The Super Ball

14009
9.5 x 9.5 x 12



The Saucer

14006
16 x 17.8 x 2.2



The Plate

14007
22.2 x 25 x 2.3



The Platter

14008
35.5 x 23.5 x 2.2

Shell Line





an essential design welcomes a global cuisine



SHELL LINE COLLECTION

- Available in porcelain matt finish
- Available in porcelain glazed finish



Shell Dinner

Matt: 12011
Glazed: 12001
27.5 x 28.5 x 2.5



Shell Deep

Matt: 12012
Glazed: 12002
25 x 26 x 6



Shell Dessert

Matt: 12014
Glazed: 12004
19.5 x 20.5 x 4



Shell Salad

Matt: 12013
Glazed: 12003
21.5 x 22 x 7.5



Shell Ramen

Matt: 12015
Glazed: 12005
18.5 x 19.5 x 8.5



Shell Ice Cream

Matt: 12017
Glazed: 12007
13 x 13.5 x 6.5

SHELL LINE BELTZ COLLECTION

- Available in black colour clay porcelain



Shell Dinner
Beltz

12021
27.5 x 28.5 x 2.5



Shell Salad
Beltz

12023
21.5 x 22 x 7.5



Shell Ramen
Beltz

12025
18.5 x 19.5 x 8.5



Shell Ice Cream
Beltz

12027
13 x 13.5 x 6.5

Yayoi





flexible and adaptive forms to create your own table settings

YAYOI COLLECTION

- Available in porcelain matt finish
- Available in porcelain glazed finish



Yayoi Superflat

Matt: 11016
Glazed: 11006
26 x 24.5 x 4



Yayoi Flat

Matt: 11014
Glazed: 11004
23 x 20 x 3.5



Yayoi Deep

Matt: 11013
Glazed: 11003
19 x 16 x 4



Yayoi Side

Matt: 11012
Glazed: 11002
14 x 11 x 3



Yayoi Appetizer

Matt: 11011
Glazed: 11001
10 x 6 x 3.5



Yayoi Board

Matt: 11018
Glazed: 11008
33.5 x 12 x 3.5



Yayoi Bowl

Matt: 11017
Glazed: 11007
20.5 x 14 x 7



Yayoi Set

Matt: 11015
Glazed: 11005





YAYOI BELTZ COLLECTION

· Available in black colour clay porcelain



Yayoi Superflat
Beltz

11026
26 x 24.5 x 4



Yayoi Flat
Beltz

11024
23 x 20 x 3.5



Yayoi Deep
Beltz

11023
19 x 16 x 4



Yayoi Side
Beltz

11022
14 x 11 x 3



Yayoi Appetizer
Beltz

11021
10 x 6 x 3.5



Yayoi Board
Beltz

11028
33.5 x 12 x 3.5



Yayoi Bowl
Beltz

11027
20.5 x 14 x 7



Yayoi Set
Beltz

11025

YAYOI BAMBOO TRAY COLLECTION



Yayoi Small Tray
Bamboo

11201
31 x 29 x 2.5



Yayoi Big Tray
Bamboo

11202
43 x 36 x 2.5

Jomon



**our iconic and unique design
for the latest table**



JOMON COLLECTION



Jomon Mini
White

10201
10 x 8 x 5



Jomon Mini
Black

10206
10 x 8 x 5



Jomon Mini
Gold

10204
10 x 8 x 5



Jomon Mini
Silver

10205
10 x 8 x 5



Jomon S
White

10301
14 x 11 x 4



Jomon S
Black

10306
14 x 11 x 4



Jomon S
Gold

10304
14 x 11 x 4



Jomon S
Silver

10305
14 x 11 x 4



Jomon L
White

10501
18 x 14 x 9



Jomon L
Black

10506
18 x 14 x 9



Jomon L
Gold

10504
18 x 14 x 9



Jomon L
Silver

10505
18 x 14 x 9

JOMON PORCELAIN TRAY COLLECTION

- Available in porcelain matt finish
- Available in porcelain glazed finish



Jo 1

Matt: 20111
Glazed: 20101
7 x 8 x 1



Jo 2

Matt: 20112
Glazed: 20102
29 x 10 x 1



Jo Plate

Matt: 20113
Glazed: 20103
29 x 15 x 2



JOMON BELTZ COLLECTION

· Available in black colour clay porcelain



Jomon Mini
Beltz

10207
10 x 8 x 5



Jomon S
Beltz

10307
14 x 11 x 4



Jomon L
Beltz

10507
18 x 14 x 9

JOMON BAMBOO TRAY COLLECTION



Jo 1
Bamboo

20201
7 x 8 x 1



Jo 2
Bamboo

20202
29 x 10 x 1



Jo Plate
Bamboo

20203
29 x 20 X 1



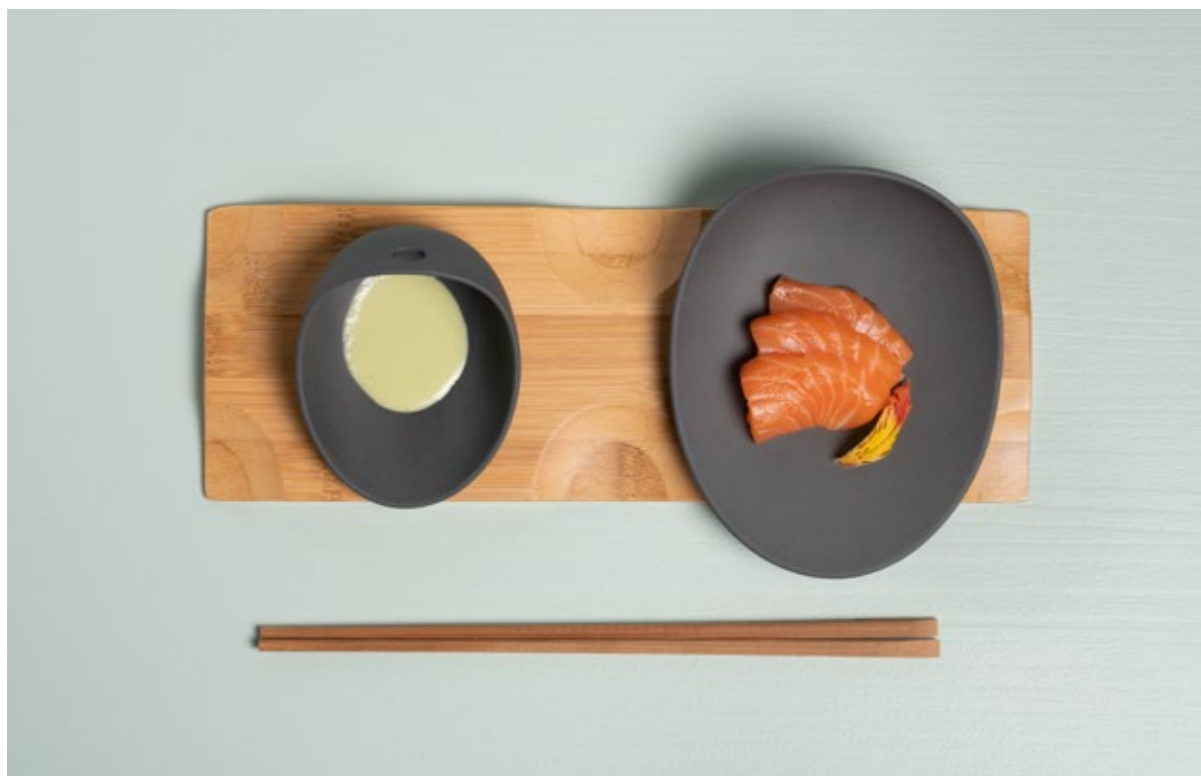
Jo 8
Bamboo

20204
44 x 20 x 1



Jo 12
Bamboo

20205
52 x 22 x 1



Naoto





**functional and pleasant forms
for casual meals**

NAOTO WHITE COLLECTION



Naoto Side
White

50001
13 x 12 x 2.5



Naoto Ø17
White

50003
17 x 16 x 2.5



Naoto Ø25
White

50005
25 x 22.5 x 2.5



Naoto Ø29
White

50006
29 x 26.5 x 2.5



Naoto Bowl
White

50002
14 x 12 x 6



Naoto Deep
White

50004
23 x 20,5 x 5



Naoto Board
White

50007
42 x 12,5 x 2,5



Naoto Serving dish
White

50008
36 x 20 x 5



NAOTO ICE BLUE COLLECTION



Naoto Side
Ice Blue

50021
13 x 12 x 2.5



Naoto Ø17
Ice Blue

50023
17 x 16 x 2.5



Naoto Ø25
Ice Blue

50025
25 x 22.5 x 2.5



Naoto Ø29
Ice Blue

50026
29 x 26.5 x 2.5



Naoto Bowl
Ice Blue

50022
14 x 12 x 6



Naoto Deep
Ice Blue

50024
23 x 20,5 x 5



Naoto Board
Ice Blue

50027
42 x 12,5 x 2,5



Naoto Serving dish
Ice Blue

50028
36 x 20 x 5

NAOTO DARK GRAY COLLECTION



Naoto Side
Dark Gray

50011
13 x 12 x 2.5



Naoto Ø17
Dark Gray

50013
17 x 16 x 2.5



Naoto Ø25
Dark Gray

50015
25 x 22.5 x 2.5



Naoto Ø29
Dark Gray

50016
29 x 26.5 x 2.5



Naoto Bowl
Dark Gray

50012
14 x 12 x 6



Naoto Deep
Dark Gray

50014
23 x 20,5 x 5



Naoto Board
Dark Gray

50017
42 x 12,5 x 2,5



Naoto Serving dish
Dark Gray

50018
36 x 20 x 5

Fly



stylish coffee



FLY COLLECTION

· Available in porcelain matt finish (inside glazed)



Fly 60
Cup & Saucer

13011



Fly 60 Cup

13013
D 6.5 H 7



Fly 60 Saucer

13014
D 9 H 2



Fly 140
Cup & Saucer

13012



Fly 140 Cup

13015
D 9 H 8



Fly 140 Saucer

13016
D 11 H 2



Fly Jug

13017
14.5 x 8.5 x 11

· Available in porcelain glazed finish



Fly 80
Cup & Saucer

13001



Fly 80 Cup

13003
D 8.5 H 5.4



Fly 80 Saucer

13004
D 13 H 2



Fly 180
Cup & Saucer

13002



Fly 180 Cup

13005
D 9.5 H 7.5



Fly 180 Saucer

13006
D 15.5 H 2



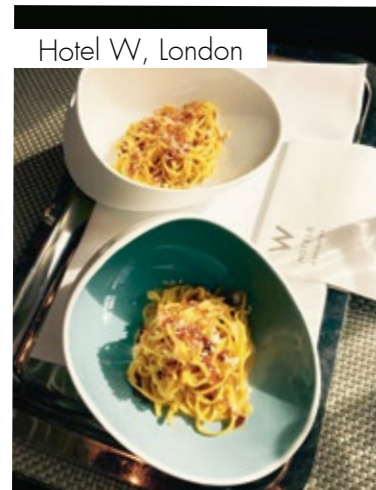
Lasarte, Barcelona ***



Zarate restaurant *



Le Basque Catering, Miami



Hotel W, London



Yoshiharu Kaji, Felix chef at Peninsula Hotel Hong Kong



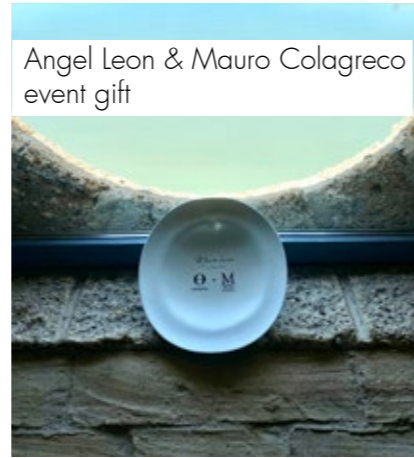
Julien Dugourd **



Kiko Moya **



Gordon Ramsay ***



Angel Leon & Mauro Colagreco event gift



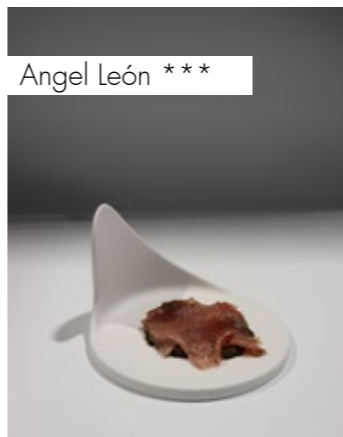
Celler de Can Roca ***



Four Seasons, Madrid



Dominique Crenn ***



Angel León ***



Maison Carte D'Or, Paris

Hotel Marriott Renaissance, Paris



Pacha Ibiza



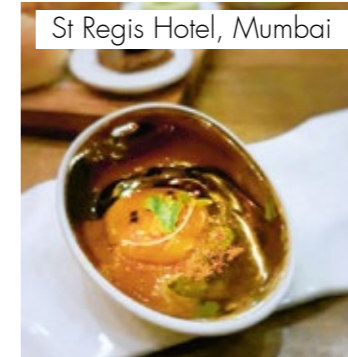
Chef Juan Mari Arzak ***



Chef Eneko Atxa ***



Event Fondation Louis Vuitton catering by Potel et Chabot



St Regis Hotel, Mumbai



Kabuki *



Francis Paniego, El Portal **



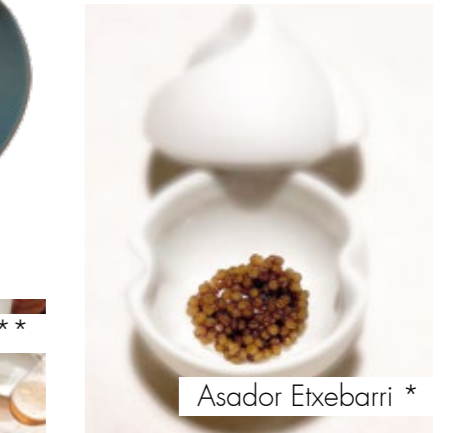
Merci, Paris



Cutipol Store



Lafayette Gourmet, Dubai



Asador Etxebarri *



La Chèvre d'Or **



Chef Martin Berasategui ***

PROJECTS WE LOVE

COOKPLAY CARE INSTRUCTION

• Porcelain matt finish (Biscuit Porcelain)

Biscuit is pure porcelain from the oven at 1,300 degrees, unglazed. It has no pores so it is a material with great properties in terms of density, hardness and easy to clean superficially. However, stubborn stains from food or flatware must be removed before the dishwasher with soap and the green part of the sponge (e.g Scotch Brite).

We suggest to immerse the pieces from time to time in water with a normal whitening powder to keep the white and brightness of the porcelain.

Professional dishwasher safe, microwave safe and suitable for oven to gratinate and keep warm.

• Care for gold and silver finish, Jomon collection.

Professional dishwasher safe, but not safe for microwave or oven.

We recommend to place a separator between bowls when stacked. Silver and gold finish can be damaged when the external matt porcelain of the piece touches the next bowl edge.

COOKPLAY RECOMENDACIONES DE USO

• Porcelana Mate (Biscuit)

La porcelana biscuit es la porcelana más pura cocida a 1.300 grados sin esmalte. A esta temperatura la porcelana se vitrifica, no tiene poros y conserva una propiedades excelentes en cuanto a dureza y resistencia con una fácil limpiar superficial.

Para evitar las manchas rebeldes de alimentos o de cubiertos se debe quitar la comida del plato con jabon y la parte verde de la esponja (Scotch Brite) antes del lavavajillas.

Recomendamos ocasionalmente sumergir la vajilla en un baño de agua con algunos polvos blanqueadores para mantener el blanco y el brillo de la porcelana.

Apto para lavavajillas, microondas y horno para gratinar y calentar.

• Colección Jomon acabados dorado y plateado

Apto para lavavajillas pero no apto para microondas ni horno.

Recomendamos poner un separador entre los boles para apilar y almacenar ya que los esmaltes se pueden dañar cuando la porcelana mate externa toca el borde del esmalte dorado o plateado.

FOLLOW US



Copyright © 2022 Cookplay
Published and designed by Cookplay

All rights reserved. No part of this publication may be reproduced or transmitted in any form or by any means, electronic or mechanical, including photography, recording or any information storages and retrieval system without permission in writing from publisher.

Photographs by Mikel Ponce, Aitor Ortiz & Cookplay

With special thanks to Chef Israel Ramos & Chef Alvaro Garrido